

Additional questions

Note the following table of \sin^{-1} values:

x	$\sin^{-1}(x)$	x	$\sin^{-1}(x)$
0	0	0.6	36.9
0.1	5.7	0.7	44.4
0.2	11.5	0.8	53.1
0.3	17.5	0.9	64.2
0.4	23.6	1.0	90.0
0.5	30.0		

Note also if $\sin(\theta)=x$, then $\sin(-\theta) = -x$

What is the location of the sound source for a typical head given the sound arrives at the left ear and the right ear at the specified times below. (You may estimate your answer based on the table above.)

(a) $t_{\text{left}}=13.5\text{ms}$ $t_{\text{right}}=13.1\text{ms}$

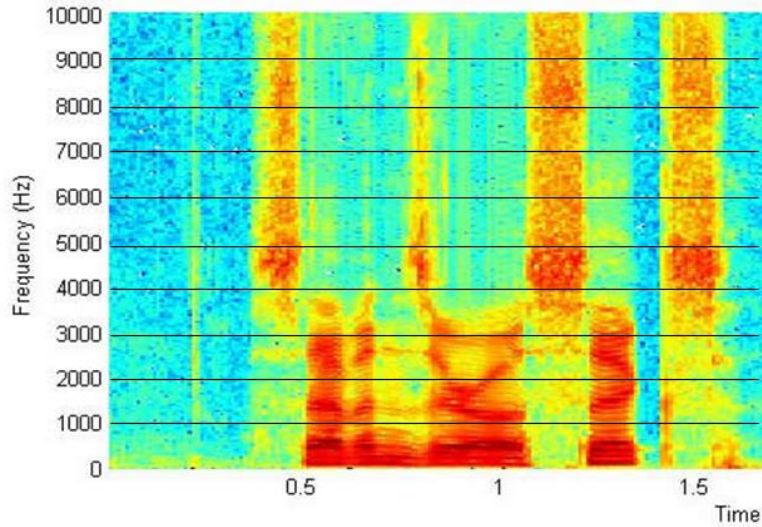
(b) $t_{\text{left}}=24.2\text{ms}$ $t_{\text{right}}=24.4\text{ms}$

(c) $t_{\text{left}}=41.3\text{ms}$ $t_{\text{right}}=40.75\text{ms}$

$\sin^{-1}(343 \times 0.00055 / 0.2) = \sin^{-1}(0.94) = 70.6^\circ$ (something between 64 and 90)

If we increase our head size from 0.2m to 0.4 m, what happens to the range of possibly accepted sound timing differences Δt ?

- (a) Stays the same
- (b) Gets larger
- (c) Gets smaller



Identify the time intervals for at least three times the 's' or 'ch' sound occurs in the "spectrogram" above (plotting frequency vs time).

The letter 'r' is said at least once during this recording. Identify a time it may have been said.

'r' produces a frequency glide, e.g., **0.9-1s** or **0.8-0.85s** or **1.3-1.35s** (the actual true answer is 0.8-0.85, but all the above would be accepted)

What other sounds look like the letter 'r' in a spectrogram?

Identify the formants for the first vowel in this recording.

First two formants: 600 Hz and 1500 Hz

Identify the formants for the last vowel in this recording.

Let us suppose the spectrogram above (showing power of frequency over time) comes from a matrix called `soundRecording` with dimensions 10,000 x 1,700 (for information at 1-10,000Hz and 1-1700 ms).

What Matlab command would generate the colored figure shown above? (Don't worry about generating the x and y axis labels and the black lines)
`imagesc (soundRecording)`

What command(s) will let us know the largest and highest values in the `soundRecording` matrix ?

Let us say we want to extract the frequencies across time for `word2`, taking place from 751ms to 1100ms. Write code to define `word2Matrix` (a 10,000x350 matrix) to record the desired data.

The following is more challenging, but it is possible the most challenging Matlab question be like this:

What if measuring data at every single Hz frequency is too much? Instead, we'd prefer to take the average energy at every 50 Hz. Write code to define `soundRecordingSmall` that is a 200x1700 matrix containing the sounds at all 1700ms, but with frequency energy summarized for every 50 Hz. For example, `soundRecordingSmall(1,20)` will have the average values `soundRecording(1,20)`, `soundRecording(2,20)` through `soundRecording(50,20)`.