

CISC 3250 Systems Neuroscience

Perception (Vision)



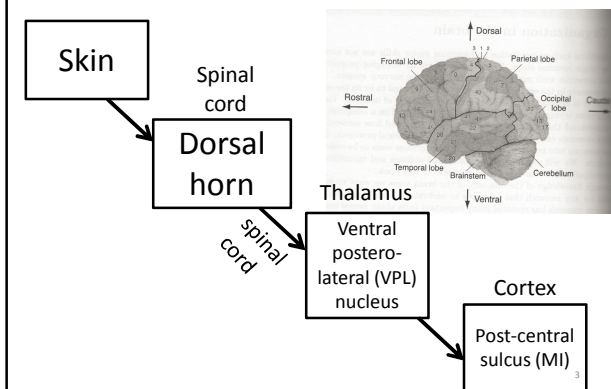
Professor Daniel Leeds
dleeds@fordham.edu
JMH 328A

Pathways to perception in 3 (or fewer) synaptic steps

- 0 Input through sensory organ/tissue
- 1 Synapse onto neurons in spinal cord/brain stem Bundled track of nerves to brain: spinal cord/cranial nerve
- 2 Synapse onto neurons in thalamus
- 3 Synapse onto cortical neurons in "primary ___ cortex"
- 4+ Further cortical processing

2

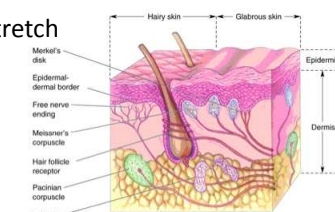
Touch/"Tactile"



Touch: Inputs

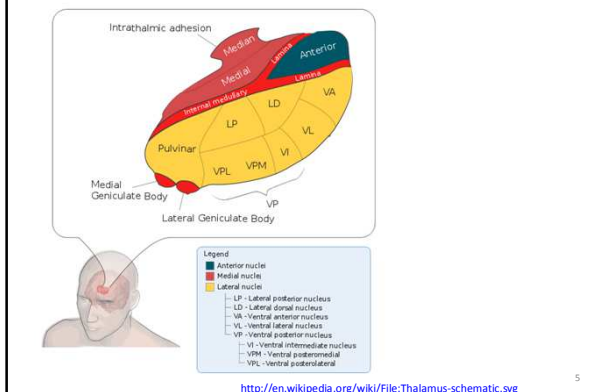
Mechanoreceptors in skin

- Pacinian corpuscles – vibrations
- Meissner's corpuscles – light touch
- Merkel's discs – pressure and texture
- Ruffini endings – stretch



4

Thalamus – the "relay" station



5

Hearing/"Auditory"

